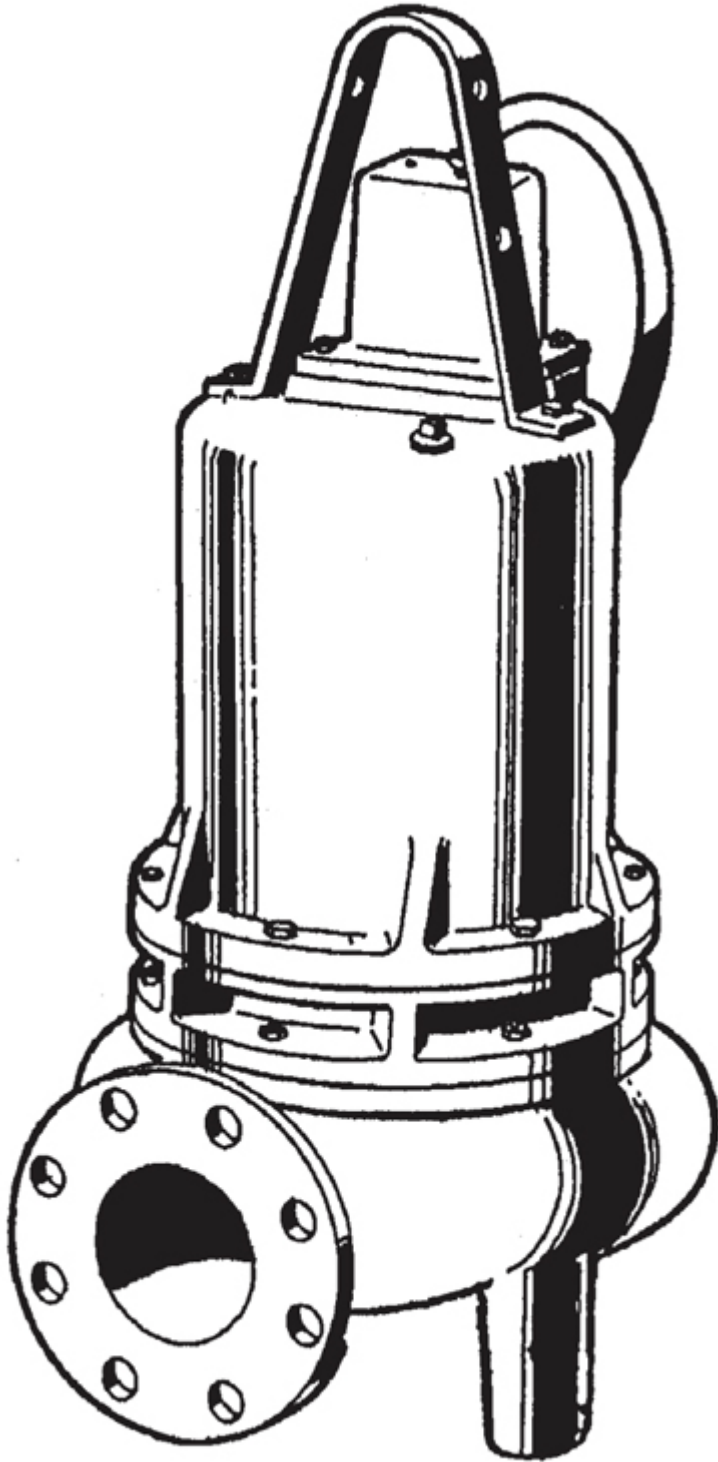


4SEV-DS – 11.3 HP

3" Spherical Solids Handling - Vortex

BARNES®



Specifications

DISCHARGE: 4" 125lb., Horizontal flange

SPEED: 1750 RPM

IMPELLER:

- **Design:** Vortex, 8 vane with pump out vanes on back side, Dynamically balanced, ISO G6.3
- **Material:** Cast iron ASTM A-48, class 30

CORD ENTRY: 40 ft. (12.1 m) Cord. Epoxy sealed housing with secondary pressure grommet for sealing and strain relief

MOTOR:

- **Design:** NEMA L- single phase, NEMA B - three phase torque curve, oil filled, squirrel cage induction
- **Winding:** Class F, class H rated magnet wire
- **Service Factor:** 1.15

SEAL:

- **Design:** Double mechanical, oil filled pressure equalized reservoir
- **Material:** Carbon/Ceramic/Buna-N

DIAPHRAGM: Buna-N

LIQUID TEMPERATURE: 104°F (40°C) Continuous

VOLUTE: Cast iron ASTM A-48, class 30

MOTOR HOUSING Cast iron ASTM A-48, class 30

SEAL PLATE: Cast iron ASTM A-48, class 30

SHAFT: 416 Stainless steel

SQUARE RINGS: Buna-N

HARDWARE: 300 Series stainless steel

PAINT: Air dry enamel (epoxy optional)

BEARINGS:

Upper Bearing:

- Design: Single row, ball, oil lubricated
- Load: Radial

Lower Bearing:

- Design: Single row, ball, oil lubricated
- Load: Radial

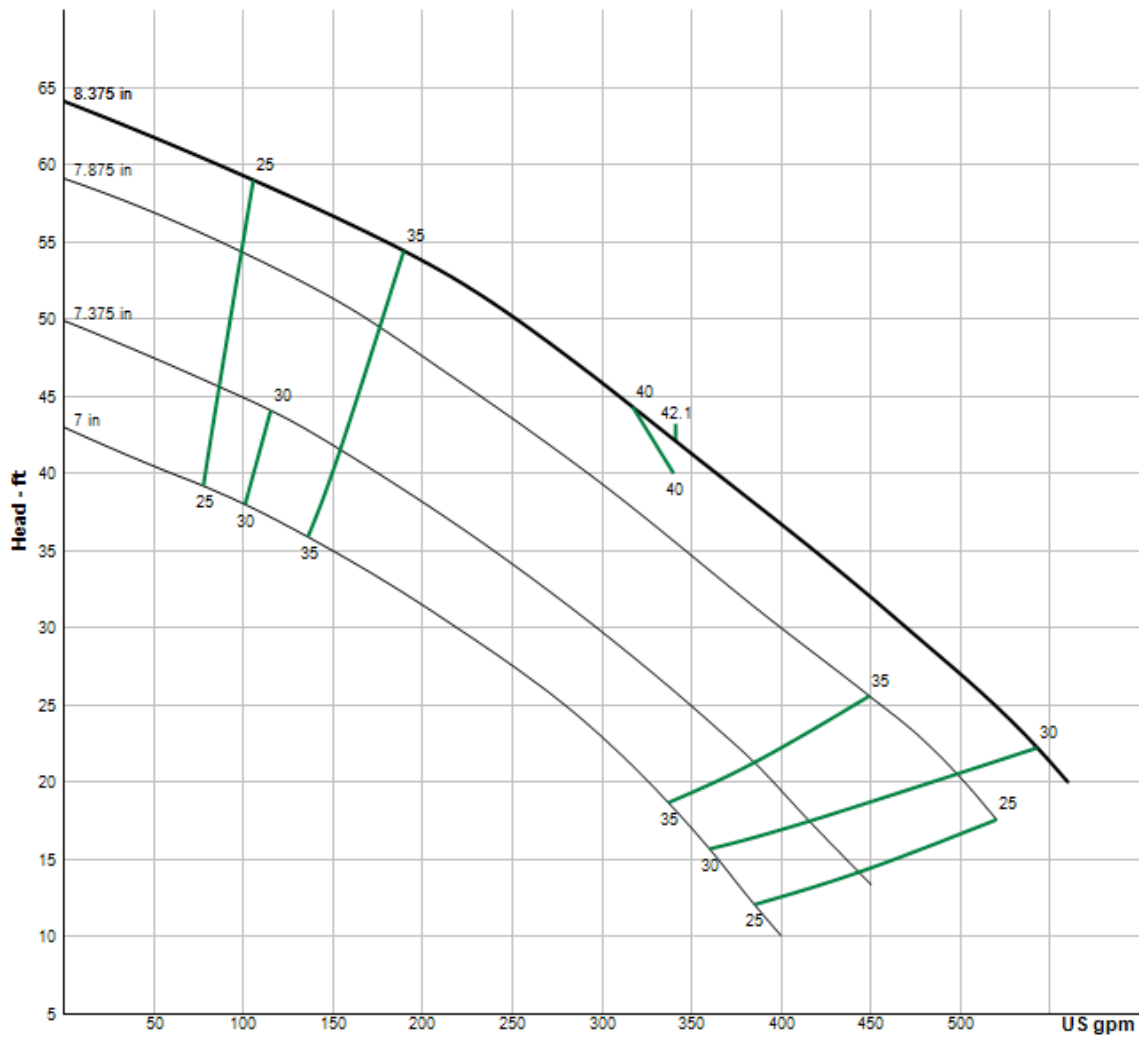
SINGLE PHASE: Capacitor start/capacitor run. Requires Barnes starter/panel which includes capacitors and overload protection

THREE PHASE: Dual voltage motor 230/460/575. Requires overload protection to be included in control panel, VFD suitable

MOISTURE SENSOR: Normally open (N/O), requires relay in control panel

TEMPERATURE SENSOR: Normally Closed (N/C), Requires relay in control panel. For three phase units ONLY

Curves



Pump HP	Impeller Dia mm (in.)
4.5	178 (7.00)
7.5	187 (7.38)
11.3	213 (8.38)
15.0	251 (9.88)

Model Information

MODEL NO.	4SEV11364DS	4SEV11334DS	4SEV11344DS	4SEV11354DS
PART NO.	140236	140237	140238	140239
HP	11.3	11.3	11.3	11.3
VOLT/PH	200/3	230/3	460/3	575/3
Hz	60	60	60	60
RPM (nom)	1750	1750	1750	1750
NEMA START CODE	B	D	D	D
FULL LOAD AMPS	32.2	28	14	11.2
LOCKED ROTOR AMPS	109.5	126	63	50.4
CORD SIZE	8/4	8/4	8/4	10/4
CORD TYPE	SOW	SOW	SOW	SOW
CORD O.D INCH (mm)	0.830 (21)	0.830 (21)	0.830 (21)	0.750 (19.1)

Drawing

